

Pertech Resources Inc.



best-in-class custom printing solutions for the banking, gaming, money order, kiosk and other markets.



delivering the best cost solution in the industry today.



innovative design features, coupled with industry-leading HP inkjet technology.

Experience the INKPACT™ Evolution

5300 Series Inkjet and Impact Banking Transaction Printers with INKPACT™ Technology

The 5300 Series printers with versatile INKPACT™ Technology are designed with today's need for speed, versatility, compatibility and reliability in mind. Ideal for any printing application that requires customer receipts or printing on an inserted form, these printers are a cost effective solution to any banking application need.

Solid Reliability

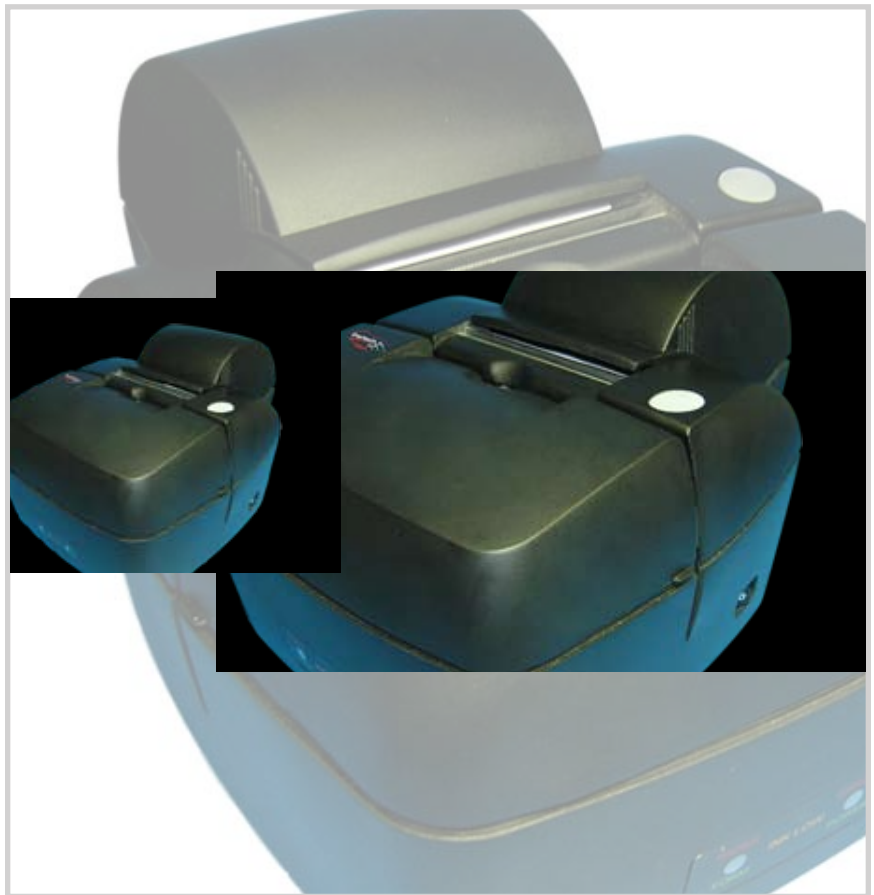
The design is the result of years of research and experience building state of the art printers for the banking, retail and POS industries.

Packed with Features

- Standard full width independent form validation of up to 14 printed lines.
- LED's indicate modes of operation, paper situation, ink conditions and printer status.
- USB 2.0 and RS232 serial interfaces standard on every printer.
- One-button setup configuration makes installation simple and trouble-free.
- Semi-automatic self-loading feed mechanism simplifies paper loading and minimizes user intervention.
- Snap-in ink jet cartridges ensure fast trouble-free replenishment.

Low Total Cost of Ownership

Pertech's 5300 series has a total cost of ownership that is the lowest of any transaction printer available on the market today. Low TCO combined with the 5300's extensive list of features delivers a cost effective teller transaction solution that is at the top of its class.



Both USB and RS232 Serial interfaces are Standard

Low Noise

Acoustically designed isolated print mechanism and platen solution for Silent Operation.

High Speed

Bidirectional logic seeking print engine provides full width printing at a fast 5 lines per second print speed.

Small Footprint

Compact with dimensions kept to a minimum, Pertech's 5300 Series' functional design is highlighted with stylish, ergonomic features for the user's convenience.



Pertech® 5300 Series Inkjet & Impact Printer Specifications

Dimensions

Height 5.38" / (136.65 mm)
 Width 6.92" / (175.77 mm)
 Length 8.9" / (226.06 mm)

Weight

R/V Models 5.75 Lbs. / (2.61 kg)
 Ext. Power Supply 1.12 Lbs. Max. / (.051 kg)

Power Supply

Impact: 60 Watt 24V Brick or Inkjet: 15 Watt 24V Wall Mount

Roll Paper

Width 3.0" +/- .03" / (76mm +/- .762 mm)
 Diameter 3.5" Max. / (88.9 mm)
 Plies 1 or 2 Ply
 Thickness .0064" Combined Two Ply (.1626 mm)
 Core ID 5/8" Min. / (15.875 mm)
 Form Original + 2, 5.5" by 2.75" Min. (139.7 X 69.9mm)
 Thickness .0015 to .0047 Multi-Ply / (.0381-.1194 mm)
 Total Media Thickness .012" Total (Includes Receipt) / (.305 mm)

Impact Ribbon

Purple 4 Million Characters
 Black 3 Million Characters Part # 100629011
 Part # 108541A (Black Ink)

Inkjet Cartridge Interface

RS232C (DB9M)
 USB 1.1, 2.0 Compatible
 9600, 19200 & 57600
 9K
 One 6 Pin Female Tele-Connector
 2 Drawer Capability / Single Sense

Baud Rates

Input Buffer

Cash Drawer

Print Speed

Inkjet: 5.0 LPS (Lines Per Sec.) @ 40 CPL (Characters Per Line), 16 CPI (Characters Per Inch) and 6LPI (Lines Per Inch)
 Impact : 4.7 LPS @ 40 CPL, 16 CPI and 6LPI

Paper Feed

Printhead

Line Pitch

Character Sets

Code Pages

5 Fonts

5 Inches Per Second
 HP Inkjet / 9 Wire Impact Dot Matrix
 5, 6, 7, 8, LPI
 USA
 437 USA, 863 Canadian-French and 1252 Latin I
 7 x 12 @ Max. 66 CPL
 10x10 @ Max. 44 CPL
 12 X 12 @ Max. 33 CPL
 OCRA (Inkjet ONLY)
 Times New Roman

Graphics

Print Line

Inkjet: 12 Nozzle / Impact: Full 9 wire
 Inkjet: 3", 96X80 DPI Draft Mode, 96X160 DPI Standard Mode. Impact: 72X80 & 72X160 DPI

Validation

Compatibility Modes

User Memory

Flash 64K Expandable to 512
 Ram 16K Expandable to 400K

Environmental

Noise <60 db Impact, 49 db Inkjet
 Operating 10° to 40° C, Humidity 10-90% Non-Condensing
 Storage -10° to 40° C, 10-90% Non-Condensing

Expected Life

Printhead Impact 300 Million Impacts Per Wire
 PCB 61K hrs
 Mechanism 8 Million Printed Lines 535K Validations

Agency Listings

Drivers

FCC Class B, C CSA US

Utilities

Windows XP, 2000
 Logo Download - Configuration

Versatility

Comes standard with Both RS232 and USB interfaces. Impact or Inkjet models capable of on site conversion. Flash memory allows for download of new software from the host. Semi-automatic paper loading and snap-in ribbon or inkjet cartridge insure fast, trouble free replenishment. A configuration mode that only requires one button for setup make the installation simple and trouble free. Standard Windows Drivers are available.

Available models

Inkjet

5351- Receipt / Validation

5354- Validation Only

Impact

5371- Independent Feed

Receipt / Validation

5374- Validation Only

For additional information about Pertech® Products, contact us at the address below or visit our Web site.

www.pertechresources.com

Pertech Resources Inc.

860 College View Drive

Riverton, WY 82501

800-800-6614



Copyright© 2006 Pertech Resources, Inc. All Rights Reserved. Patents pending. All trademarks or registered trademarks are the property of their respective owners. Printed in U.S.A. Product specifications are subject to change.